

**“ QUALITY**

***CREATS***

**TRUST”**



## Company profile

**ONE TECH VIETNAM MANUFACTURING  
AND TRADING COMPANY LIMITED**



0963 021 077



CN5, KCN Thạch Thất, Hà Nội



<https://tapdoanonetech.com/>



[tapdoanonetech@gmail.com](mailto:tapdoanonetech@gmail.com)





Ha Noi City - 28/09/2022


## OPEN LETTER

Through the historical development of mankind since ancient times, there have been proofs and conclusions for a truth: "Every journey of ten thousand miles also begins with a single step". There are historical steps that mark a great turning point, a world leap, There are legendary heroic Tay Son footsteps, and there are also glorious steps that create undying emotions, miraculous wonders. echoing.


At Onetech Vietnam, those are enthusiastic footsteps carrying the desire to change an entire generation, build good values, and conquer new heights.

Mr. Nguyen Van Trung: "In the journey of the past 10 years and the future ahead, with all our enthusiasm, spirit and intellect, Onetech Rack will constantly innovate and create to improve product quality. . Not only that, it will launch new product lines, bringing customers sustainable added values."

Step faster on the way to conquer new heights, There are footprints of you, mine, ours, people who are enthusiastic for the community, building the country and bringing the brand name Onetech shelf to reach the top. international level.

 0963 021 077

 CN5, KCN Thạch Thất, Hà Nội

 <https://tapdoanonetech.com/>

*We will be glad to serve you!*

*"On the way to success, there is no trace of lazy men."*

*Thiet Le  
(VICE CEO ONTECH)*



*“Discipline is the bridge between goals  
and accomplishment.”*

*Van Trung Nguyen  
(CEO ONETECH)*

## MENU

*Company introduction*

*Vision / Mission / Core Values*

*Development process*

*Organizational structure / Key personnel*

*Business Sectors*

*Project List*

*Achievements - awards*

*Corporate culture*

*Equipment - machinery*

*Products - services*

*Partners customers*



# INTRODUCTION



Established in 2012, ONETECH is a company specializing in manufacturing shelves for supermarkets, warehouses and distribution to most provinces and cities across the country.

Originally a small business. After more than 10 years of hard work, together with the leadership of dynamic and creative young managers, Onetech Group has made rapid breakthroughs in development. Up to now, ONETECH is firmly in the leading position, is one of the units that manufacture international standards ISO 9001:2015 and provide racks spread throughout the market in 3 regions.

With a scale of more than 46,000m<sup>2</sup> of factories, more than 3000 workers operating the line operating at full capacity according to Japan's JIT (Just In Time) process, ONETECH strives to meet the needs of customers and 150+ agents. nationwide. Moreover, a management team of over 20 people, and 100+ engineers with doctorate, master's and university degrees deploy projects under a high quality control process, satisfying even the most demanding customers from Korea and Japan like Kagakawa, Hyundai...

## INTRODUCTION

Understand the difficulty because production output has not caught up with market demand. At the same time, the company implements a strategy of expanding production and improving quality according to international standards to export high-quality supermarket shelves and warehouse shelves to the Korean, Japanese, and European markets. ... ONE-TECH has expanded production scale, added a large number of lines, advanced technology and trained and transferred technology to realize the goal of doubling the current capacity.

In parallel with the expansion plan, for export promotion activities: ONE-TECH team is also promoting the necessary procedures to comply with the paperwork to prove that the product meets international standards and meets the requirements of international standards. condition. export to the international market. Then there is the negotiation and signing of contracts with foreign partners to fulfill ONETECH's desire to reach out to 5 continents.

For the domestic market, ONETECH continues its agent expansion program, reaching out to all 64 provinces and cities across the country. To achieve this goal, ONETECH will apply a new set of dealer review standards with higher standards. At the same time, it also brings agency care policy, sales/marketing training and support from the company in designing and implementing more professional projects to each agent.

Understanding the key issues that determine the success of the business not only has a development plan but also requires an increasingly high quality of products and services. ONETECH always researches and develops the maximum functionality of shelf models. The designs catch up with modern design trends to meet the needs of customers in terms of functionality and aesthetics for space. Not only that, the shelf ONETECH put on the market always has the most reasonable price in the market, with the best after-sales service. Therefore, our products always receive the trust of large and small partners nationwide. Typically, some big partners such as: GOMart, WinMart...



## VISION, MISSION

Developing a team with more and more professional skills and initiatives with dedicated services that always keep the credibility and loyalty to the commitment for the Vietnamese community, towards trade promotion of ONETECH brand honoring the Vietnamese people South on the international market.



## PRODUCTION POTENTIAL

The two factories are equipped with modern machinery and robot production systems, affirming the No. 1 in terms of market dominance in supermarket shelves and warehouse shelves according to international standards ISO 9001: 2015. ONETECH VIETNAM continues to make double contributions to the country's economic development, affirming Vietnam to become a dragon in the Asia region.



## GOLD VALUE

ONETECH always trains the team to add more skills to support customers in market analysis, investment, branding, and community engagement consulting completely free of charge,... and many more. other utilities to jointly develop with the lowest initial investment cost.

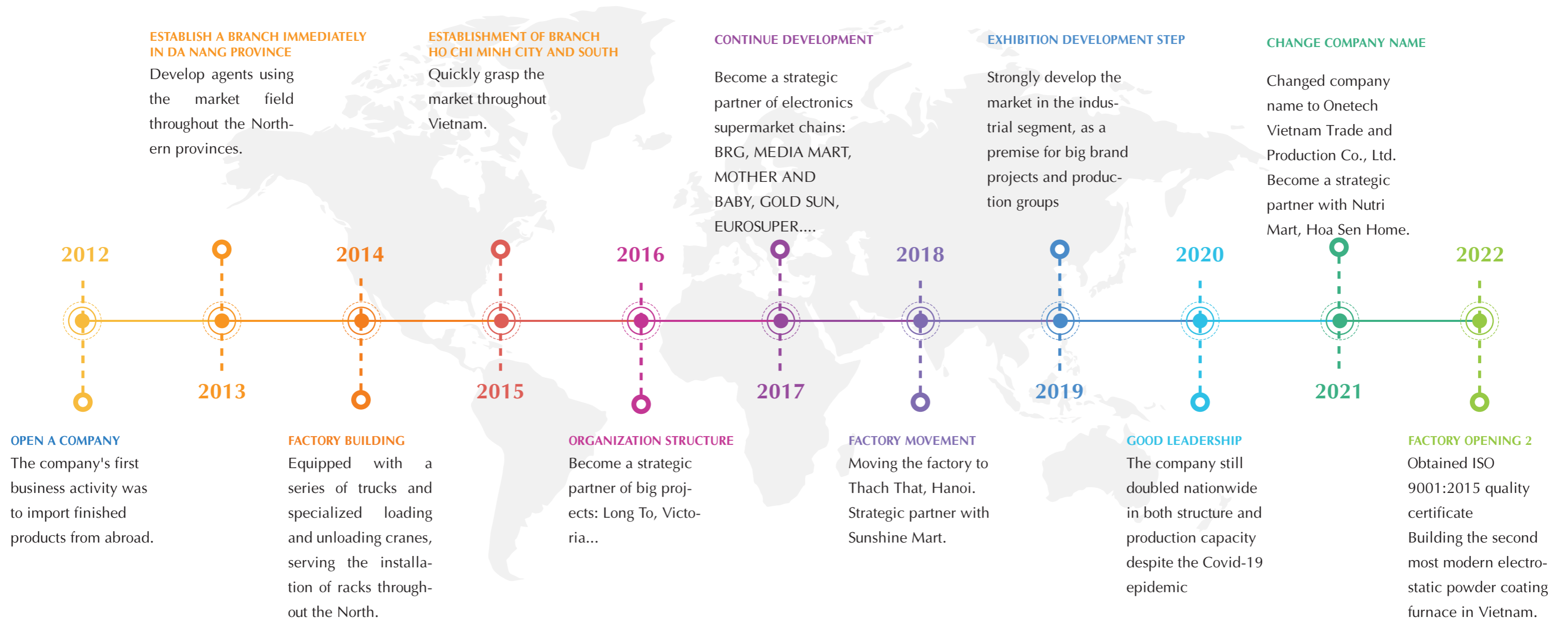
**MISSION**

**VISION**

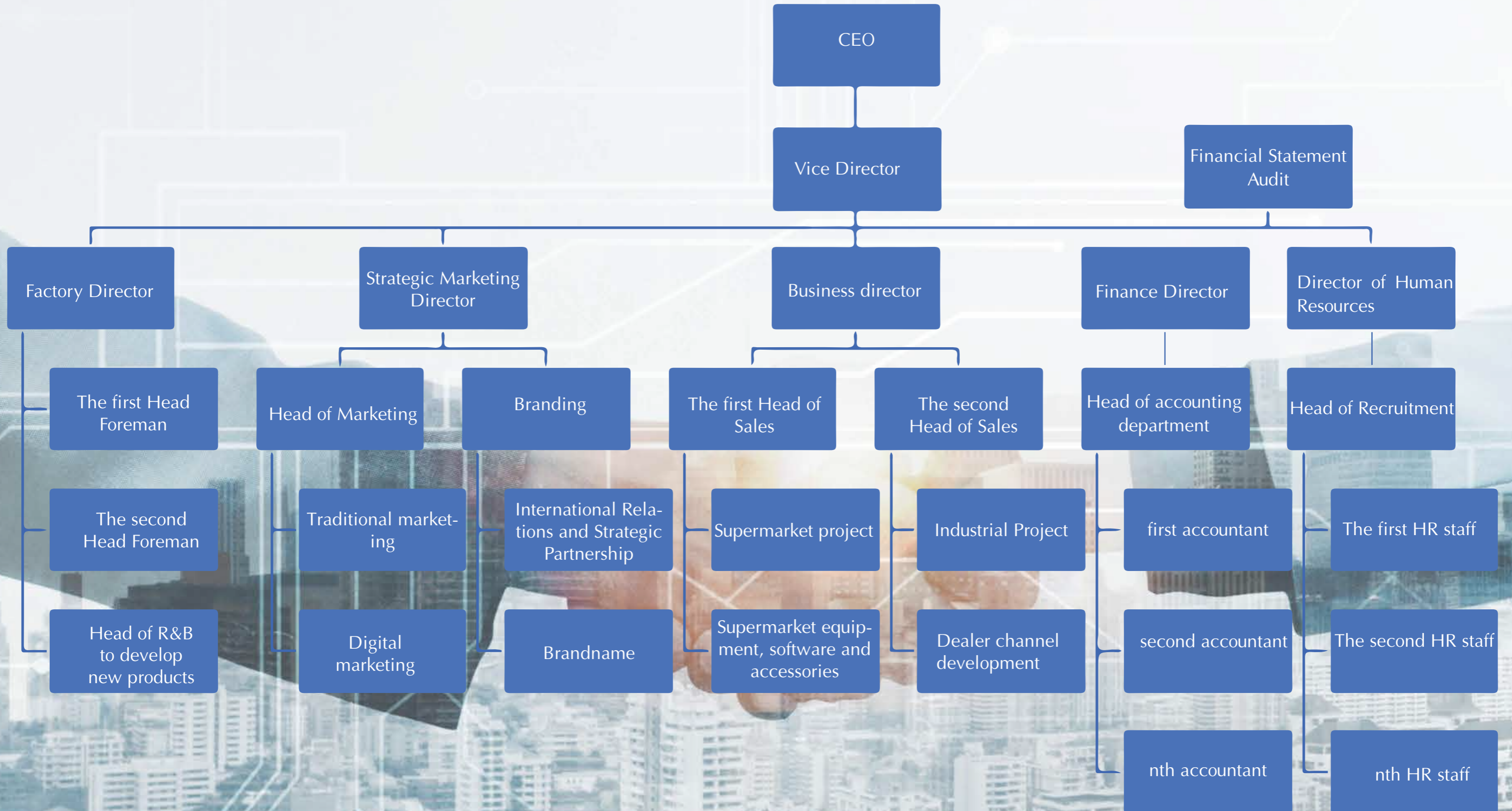
**STRATEGY**

**CORE VALUE**

# BUSINESS HISTORY



# ORGANIZATIONAL STRUCTURE



# BUSINESS SECTORS



## PRODUCING SUPERMARKET SHELVES

With more than 10 years of experience in the shelf manufacturing industry with the support of modern machinery and equipment, the factory scale is increasingly expanding. In addition to the efforts of thousands of officers and employees, Onetech Group has been and will grow stronger and stronger, maintaining its leading position in the Vietnamese market. At the same time, bringing international standard shelf products to conquer foreign markets.



## SOFTWARE ONETECH POS

With more than 10 years of experience in the shelf manufacturing industry with the support of modern machinery and equipment, the factory scale is increasingly expanding. In addition to the efforts of thousands of officers and employees, Onetech Group has been and will grow stronger and stronger, maintaining its leading position in the Vietnamese market. At the same time, bringing international standard shelf products to conquer foreign markets.



## WAREHOUSE SHELVES

However, with the strong development of the market, supermarkets and warehouses are expanding and increasing demand from strategic partners such as: GO!.Mart, WinMart, HC Mart, Media Mart, Viettel, Vinmart, Ton Hoa Sen, etc., causing the current output not to meet market demand in time. Thereby prolonging the time of receiving goods, completing construction and installation, affecting the progress of customers' requirements.



## SECURITY DEVICES & ACCESSORY

The leaders of the association of retailers, seeing the great potential of supermarket chains, are looking forward to achieving their dream of providing a complete sales and management solution with low cost and high quality. Since then, Onetech has become a point of providing complete supermarket solutions for Vietnam and Southeast Asia markets.

# SUSTAINABLE DEVELOPMENT

ONETECH factories are currently leading, affirming the No. 1 position in terms of production output in the supermarket shelf market. In early 2023, the second factory appeared, which will push to dominate the market share leading both the market share of factory and enterprise warehouse racking. ONETECH is always interested in developing environmentally friendly products and solutions, which are cheaper and cheaper, and have many solutions to support partners in business plans, optimize warehouse space to help the community save more costs.

### The key to success of ONETECH Vietnam products:

- Completely FREE design consultation for business premises and warehouses.
- National product, cheapest price, with good quality to satisfy all Vietnamese.
- Factory with the largest capacity in Vietnam, with modern technology lines.
- High quality Vietnamese products, ISO 9001:2015 international standard production process.
- Professional, experienced and highly technical deployment team.





## LIST OF PROJECTS

# SUPERMARKET SHELF PROJECT

These are typical projects that have been very successful, partners can refer to and admire the achievements and sweat of Onetech staff.

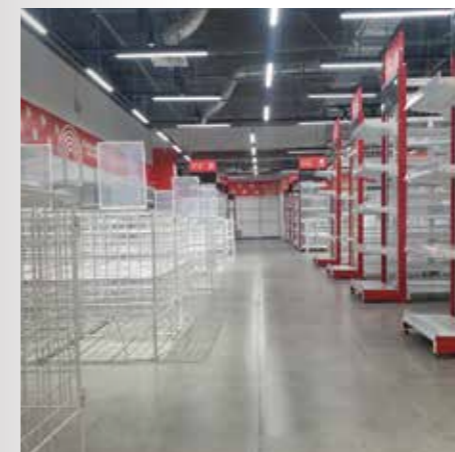


### Media Mart supermarket chain project.

Scale: 350 supermarkets or more.

Installation equipment: Electronic and household appliances supermarket shelves.

MICA

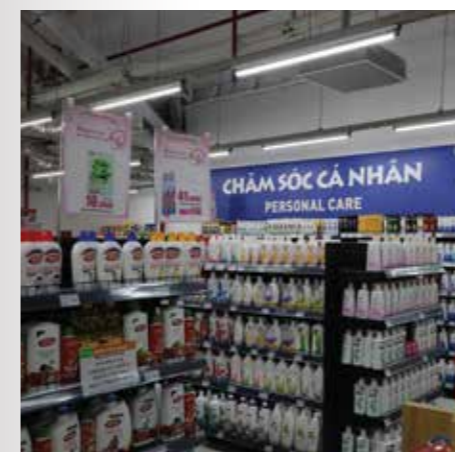


### Supermarket chain project GO! (Big C)

Scale: 10 supermarkets.

Installation equipment: Mesh back shelf, square shelf, hanger shelf, noodle basket shelf.

MICA



### Project of supermarket chain BRG Mart

Scale: 75 supermarkets.

Installation equipment: Perforated corrugated iron shelves, promotional mounds, fruit and vegetable shelves, cashier desks, noodle basket shelves, supermarket trolleys.

MICA





### Aloha Mall chain project

Scale: 11 or more hypermarkets over 10,000 m2.  
Installation equipment: Mesh back shelf, fashion shelf, promotion dock, hanger shelf, noodle basket shelf, cashier table, trolley and other accessories

MICA 



### Duc Thanh supermarket chain project


Scale: chain of more than 10 supermarkets in Hanoi.  
Installation equipment: Mesh back shelf, hanger shelf, noodle basket shelf, promotion dock, cashier desk, fruit and vegetable shelf, supermarket trolley and other equipment.

MICA 



### Minh Cau supermarket chain project

Scale: more than 4 supermarkets in Thai Nguyen.  
Installation equipment: Mesh back shelf, hanger shelf, noodle basket shelf, promotion dock, cashier desk, fruit and vegetable

MICA 



### Mom and baby supermarket chain project Jim To

Scale: banana more than 13 supermarkets in Thanh Hoa.  
Installation equipment: Mother and baby supermarket shelves, milk display shelves, promotions, cashier desks.

MICA 



### Project of shelves at CellphoneS

Scale: more than 70 stores.  
Installation equipment: Accessories hanger shelf, laptop and phone display shelf.

MICA 



### Sunshine Mart chain project of Sun Group

Scale: implemented 5 supermarkets.

MICA 



### Project of supermarket chain A&S Mart

Scale: 3 supermarkets 3000 - 5000 m2 wide  
Installation equipment: Supermarket shelves, promotional mounds, cashier desks, supermarket trolleys, pull lanes, plastic bags.

MICA 



### Project to hang advertising for brands

Design and install advertising shelves for brands Poca, Petrolimex, Samsung, Nokia, Moc Chau Milk, TH True Milk, Nagakawa, Goldsun, Cung Dinh Noodles.

MICA 



### Mom and baby supermarket chain project, Me Oi.

Scale: 10 supermarkets or more.  
Installation equipment: Wooden shelf with iron frame, perforated corrugated iron shelf, promotion mound, cashier desk.

MICA 



### Nutrimart chain store project

Scale: 1000 supermarkets or more.  
Installation equipment: Mesh back shelves, promotional squares,

MICA 



### Hoa Sen Home Project

Scale: 23 Showrooms nationwide.  
Installation equipment: Perforated corrugated iron shelf, noodle basket shelf, hanger shelf designed as required.

MICA 



### Winmart + supermarket project (old Vinmart)

Scale: 30 supermarkets.  
Installation equipment: Perforated corrugated iron shelves, fruit and vegetable shelves, noodle basket shelves, cashier desks, bags.

MICA 

## WAREHOUSE RACKING PROJECT

These are typical and successful projects, partners can refer to and admire the achievements and mourning efforts of Onetech employees.



### MUTOSI Group's heavy-duty racking project

Warehouse size: 5,000 m2



### Heavy duty project of BAYA company

Warehouse size: 2,000 m2  
Installation equipment: 6-tier heavy-duty shelf, load 1,000kg/-floor..



### Project of Ninh Binh Pharmaceutical Company

Warehouse size: 1,000 m2  
Installation equipment: 2-storey Selective shelf with a capacity of 1,000kg/floor.



### Warehouse project Ferroli

Warehouse size: 1,000 m<sup>2</sup>

Installation equipment: Mezzanine floor shelf.



### Viettel warehouse project in Hoa Lac

Scale: 1,000 m<sup>2</sup>

Installation equipment: 6-storey medium-load rack with a load of 500kg/floor.



### The project of medium-load shelves of Kitchen World Company.

Warehouse size: 2,000 m<sup>2</sup>

Installation equipment: 3-tier medium-load rack with a load of 500kg/floor.



### Project of Landco Company, Khac Niem Industrial Park

Warehouse size: 5,000 m<sup>2</sup>

Installation equipment: 3-tier heavy duty shelf 2,000kg/floor.



### Medium-load racking project in An Lao Industrial Park.

Warehouse size: 2,000 m<sup>2</sup>

Installation equipment: 5-storey medium-load rack with a load of 500kg/floor.



### BigC supermarket warehouse shelf project.

Scale: At Big C supermarkets.

Installation equipment: 5-storey medium-load rack with a load of 500kg/floor.



### Warehouse racking project in Cao An Industrial Park, Hai Duong.

Warehouse size: 3000 m<sup>2</sup>

Installation equipment: 3-tier heavy-duty shelf with a capacity of 1,000kg/floor.



### The project of installing medium-load racks in Thang Long Industrial Park

Warehouse size: 1,000 m<sup>2</sup>

Installation equipment: 5-storey medium-load rack with a load of 500kg/floor.

# ISO 9001 - 2015 CERTIFICATE





# PRODUCTION TOOLS

All kinds of machinery and equipment are manufactured and imported from advanced countries such as the US, Japan, EU with warranty, consulting optimal solutions when choosing equipment, the best after-sales service has been and is meet the increasing demand of customers nationwide.



## CNC machines produce shelf pillars

With automatic rolling and discharging technology and a system of bending steel plates into shapes with custom cross-sections, Onetech can manufacture many types of warehouse shelves, supermarket shelf pillars as well as other details. use rolling line with high precision.



## CNC machines produce supermarket shelves

Onetech has equipped an automatic supermarket shelf production line from corrugated iron cutting, cutting and embossing to ensure high-precision supermarket shelf products, neat cuts with high precision..



## Máy hàn lưới tự động.

Với dây chuyền sản xuất lưới tự động với độ chính xác cao, tính đồng đều được đảm bảo và các mối hàn chính xác với khả độ chắc chắn tuyệt đối. Giải pháp hàn lưới tự động không chỉ giảm chi phí nhân công mà còn giúp cho sản phẩm có độ chính xác cao, mẫu mã đẹp

# EQUIPMENT OF PRODUCTION





### CNC machines produce corrugated iron

With an automatic corrugated sheet cutting and stamping line, Onetech's corrugated iron products have high accuracy, even folds as well as precise and neat edges. Onetech's corrugated iron on the market is always beautiful in shape and has the correct size.



### Automatic welding robot

Onetech is a leader in the field of shelving applying automatic welding robot technology. Therefore, the welds on Onetech's products are always uniform, beautiful and of the best quality. Fast action speed and high precision increase labor efficiency.



### CNC laser cutting machine

With laser cutting technology, the details are neat and precise, meeting the needs of producing details that require beautiful designs and high accuracy.



### Transport system.

With a team of longtime drivers and trucks of existing Onetech. Onetech is always ready to go anywhere to deliver goods to customers. Onetech always supports shipping for agents as well as customers, bringing shelf products from Onetech's factory to the foot of the project.



### High quality electrostatic powder coating line

Automatic aluminum coating line is one of the systems with many outstanding advantages today. During operation, this line system helps to save natural fuel, limit excess paint powder and recover and reuse paint powder to nearly 100%.



*Connect to get power.  
Connect for success.*



# INDUSTRIAL SHELVES

It is an important product that is widely used in businesses thanks to its ability to optimize storage space effectively. However, each type of shelf is suitable for different operations.



## Angel Slotted Rack

Light weight: suitable for many purposes.

- Length: 60 - 150 (cm)
- Width: 30 - 60 (cm)
- Maximum height: 3 (m)
- Number of floors: 2 - 7 floors
- Maximum load: 120kg/floor.



## Medium Duty Rack

Accommodates medium-weight cargoes.

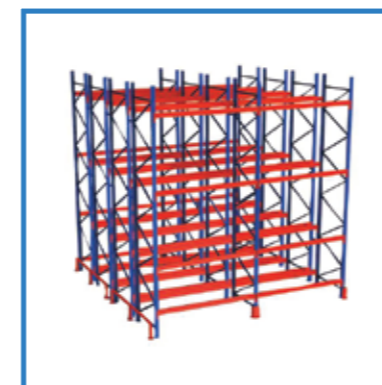
- Length: 1.5 - 3.0 (m)
- Width: 0.4 - 1.2 (m)
- Height: 1.5 - 6.0 (m)
- Number of floors: 2 - 7 floors



## Selective Rack

Store high-volume pallets in corporate warehouses.

- Length: 1.2 - 3.0 (m)
- Width: 1.0 - 2.0 (m)
- Maximum height: 8 (m)
- Number of floors: 2 - 6 floors.
- Load: Over 700kg/floor.



## Double Deep Rack

Pair two sets of Selective shelves opposite to back to optimize the pallet storage area.

- Length: 1.2 - 3.0 (m)
- Width: 2.0 - 4.0 (m)
- Maximum height: 8 (m)
- Number of floors: 2 - 6 floors
- Load: Over 700kg/floor.



## Drive In Rack.

Shelves are used to store pallets of uniform size, extremely high density.

- Length: 1.5 - 3.0 (m)
- Width: 0.4 - 1.2 (m)
- Height: 1.5 - 6.0 (m)
- Number of floors: 2 - 7 floors
- Maximum load: 600kg/floor.



## Mezzanine Rack.

Create a mezzanine floor to increase the storage area, improve the storage efficiency of the warehouse.

- Height of each floor: 2 - 3 (m)
- Horizontal width according to customer's request

# PRODUCT



# SUPERMARKET SHELVES

A device for lifting, supporting and storing goods. Supermarket shelves contain many different types of loads and designs, so they are commonly used to save space of the supermarket.



**Single mesh back shelf**

The price is cheaper than the other 2 models.

Weight: 60kg.

Mica color: Green, blue, red, white.

Total width: 410mm - 510mm.

Floor wheel width: 350 - 450mm.

Bottom plate width: 300 - 350mm.



**Single perforated supermarket shelf**

Inheriting the advantages of the other 2 supermarket shelf models.

Weight: 70kg.

Mica color: Green, blue, red, white.

Total width: 410mm - 510mm.

Floor wheel width: 350 - 450mm.

Bottom plate width: 300 - 350mm.



**Single shelf with smooth back.**

Khả năng chịu tải cao hơn 2 mẫu còn lại.

Tải trọng: 90kg.

Màu mica: Xanh lá cây, xanh dương, đỏ, trắng.

Tổng chiều rộng: 410mm - 510mm.

Chiều rộng mâm tầng: 350 - 450mm.

Độ rộng đáy mâm: 300 - 350mm.



**Double mesh back shelf**

Layout in the middle of the supermarket floor.

Weight: 60kg.

Mica color: Green, blue, red, white.

Total width: 760 - 860mm - on request.

Floor wheel width: 350 - 450mm.

Bottom plate width: 300 - 350mm.



**Double perforated supermarket shelf**

Create aisles for the store.

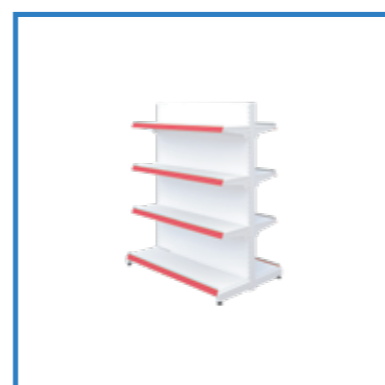
Weight: 70kg.

Mica color: Green, blue, red, white.

Total width: 410mm - 510mm.

Floor wheel width: 350 - 450mm.

Bottom plate width: 300 - 350mm.



**Double shelf with smooth back**

Increase authentication and storage efficiency.

Weight: 90kg.

Mica color: Green, blue, red, white.

Total width: 410mm - 510mm.

Floor wheel width: 350 - 450mm.

Plate bottom width: 300 - 350mm.

# SUPERMARKET ACCESSORIES

Supermarket shelf accessories include display support products such as: basketballs, supermarket shelves (single hanger, double hanger), horizontal bar to hang supermarket items such as cutting boards, knives, cutting boards, dog event accessories cats, phone cases, shelves, barriers, supermarket basketballs... Shelves are used to display products such as dishes, kettles.



**Xprinter receipt printer**

Xprinter is a brand specializing in providing printing equipment for commercial use. The machine has high durability with automatic paper cutting mode for user convenience. Printer xprinter for fast printing speed, stable thermal quality. And this is also one of the solutions for efficient receipt printing in stores.



**Receipt printer PRP 085**

With a square design and full of basic features such as self-cutting paper, fast print speed, and temperature printing head, the text is displayed on bold paper evenly and with high durability. The machine is designed with open buttons and a power switch on the side, which is very convenient for changing paper as well as managing power.



**Barcode Printer G500**

The leading solution for shops in stamp printing cannot ignore the godex brand. Godex G500 is not a roll printing solution that helps stamps with high color fastness and can print labels on large paper sizes with fast printing speed. Stamps are printed by godex g500 machine with high definition and durable color.



**Barcode printer 350B**

The alternative to ink-based stamp printers is thermal stamp printers. With the advantages of low cost, fast printing speed, clear barcode. The weakness of the thermal stamp printer line is that the color fastness of the stamps is not high, only suitable for stamps used in a short time.



**Gate from the supermarket**

For supermarkets and shops, security gates are one of the most effective solutions to avoid losing goods. Magnetic gates can have 2-3 wings with high magnetic sensitivity to help warn when goods are passing through, and all goods when passing through the gate have not been paid.



**Soft tag.**

With a special magnetic structure that functions like a thin chip hidden between two layers of stamp paper. Soft tags are used to stick on products and must be demagnetized through special equipment before passing through the magnetic gate. Using soft tags is a solution for managing goods with high efficiency and low cost.



### Hard tag.

For high-value goods that are difficult to identify when transporting out of the store, hard tags are an indispensable solution. Goods must have hard tags attached to the product and it is very difficult to remove from the product. Hard tags come with pins or stainless steel cables. To ensure that stamped goods can be removed from the store without alarms, the tag must be removed from the product.



### Invoice paper.

This is a standard sized specialized paper with special characteristics for thermal printers on the market today. Paper has a special structure and can change the color of the paper surface during exposure to certain temperatures. Colors can be stored for a relatively long time and cannot be erased or erased. Paper has the main sizes including size 80mm and 57mm. Thermal paper can still be used in ink printers like regular paper



### Supermarket trolley

It is an indispensable device in large-scale supermarkets and stores. This is a means of not only storing goods for customers, but also a solution to help customers feel more comfortable when shopping, enabling customers to buy more.



### Trolley

Freight solutions in light-duty warehouses as well as in supermarkets. With trolleys, the transportation of goods from the warehouse to the display on the shelf is more convenient and can move more goods.



### Warehouse machine

Goods management solutions in warehouses cannot ignore this device. With a compact design and can read product barcodes without having to take notes. The device can synchronize the quantity of goods in stock with the computer instead of using paper notes.



### Barcode reader

The solution to help sales work faster and more accurately is used together with Onetech's specialized sales software. With fast barcode reading speed, customer payment becomes simple and accurate.



### Sales management software

Researched and developed by Onetech specialized in supermarkets and retail stores based on the actual needs of stores. With full basic and advanced features to help the store easily manage goods as well as revenue.



### Supermarket bags

Solution for customers entering the supermarket to buy small quantities of goods. Moving in the store will be more convenient and can buy more types of goods.

# IMPORTANT PARTNER.



Currently hundreds of golden partners including leading supermarkets in Vietnam such as Go! Mart, WinMart, HC, MediaMart ... always give full trust to cooperate and use ONE-TECH products for a long time. ONETECH is meeting the strictest order requirements from strategic partners in Korea and Japan such as K-Mart, Nagakawa...

<https://tapdoanonetech.com/>

